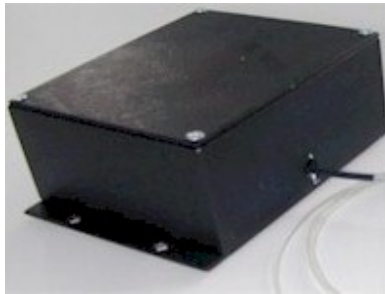


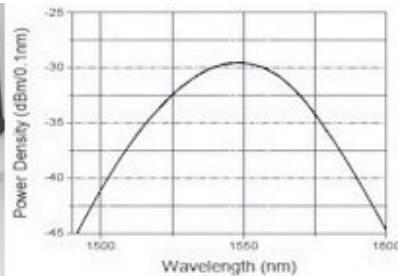
Mini Size SLD Broadband Light Source

O/E LAND INC. offers low cost, mini size fiber coupled broadband light source with model number **OELS-5000-SLD** which can be used as OEM light source inside customer instrumentations and equipments.

OELS-5000-SLD fiber coupled SLD broadband light source is a mini size, low cost, high output power broadband light source widely used as OEM in telecommunication, sensor, biomedical, testing and instrumentation applications.



OELS-5000-SLD



SLD Light Source Spectrum

Features:

- OEM product
- Single 5V DC input
- Single mode, multi mode or PM fiber output
- High output power, low noise
- CW or pulse operation
- SLD center wavelength from 650nm to 1650nm
- Wide Wavelength selection
- Connector type: FC/PC, FC/APC, ST, SC, SMA

Specifications

Power Output in Fiber	>500uW
Center Wavelength	650nm to 1650m
Bandwidth (FWHM)	> 30 nm
Connector(receptacle or fiber pigtail)	FC/PC, FC/APC, ST, SC, SMA
Fiber Type	SM, MM and PM
Box Size	85mm x 61mm x 35mm (width x length x height)
Electrical Input	5V DC
Operation Temperature	5°C - 45°C
Operation mode	CW and pulse