

[OEMOD-PLD-100]

Pulsed Laser Diode Driver

Features:

- Multifunctional:
 - Pulsed laser diode driver
 - Pulse picker driver
 - Digital delay generator
- Optimized for laser pulse-picking, timing & control systems
- Laser pulse-picking up to 60 MHz input / 40 MHz output
- Stand-alone 1Hz to 40 MHz pulse generator
- 5 ns pulse resolution
- Delay generator
- USB interface with control software
- Single mode laser driver up to 1A modulation current
- TEC controller
- Monitor real time laser diode current, temperature and average output power
- Two SMA TTL input triggering
- Two double SMA TTL output
- RF SMA output with amplitude adjustable from 0-5V



Pulsed laser driver

Product description:

These laser pulse drivers / digital delay generators are precise, multi-functional synchronization modules for timing control of lasers and electronic systems. The OEMOD-PLD-100 enables the user to consolidate multiple functions into one affordable compact device with a user-friendly software interface to allow the user to input or modify the pulse width, frequency or output current modulation. They can be used as an ultra-fast laser pulse-picker, a stand-alone laser diode pulse driver, or as a pulse delay generator for digital synchronization of laser timing systems. This unit is an ideal choice for generating high frequency pulses, delays and bursts in laser timing and control applications. These units can be used as a stand-alone laboratory testing product or for OEM integration into your product. Applications of these pulse delay generators include component testing, laser timing control, laser pulse-picking and laser diode pulsing.

PULSE DELAY GENERATOR OUTPUT (SMA CONNECTORS, TTL1, TTL2, RF and Laser diode)

- Pulse Delay Resolution: 5 nsec
- Pulse Width Resolution: 5 nsec
- Adjustable Pulse Delay Range: 0 to 10 seconds
- Adjustable Pulse Width Range: 5 nanoseconds to 10 seconds
- Coupling Impedance: 50 Ω
- Output Level: TTL and RF (0-5V adjustable)
- Rise Time: 3 nsec (typical)

PULSE DELAY GENERATOR INPUT TRIGGERING SMA CONNECTORS

- Input Voltage: TTL
- Max Input Rate: 60 MHz

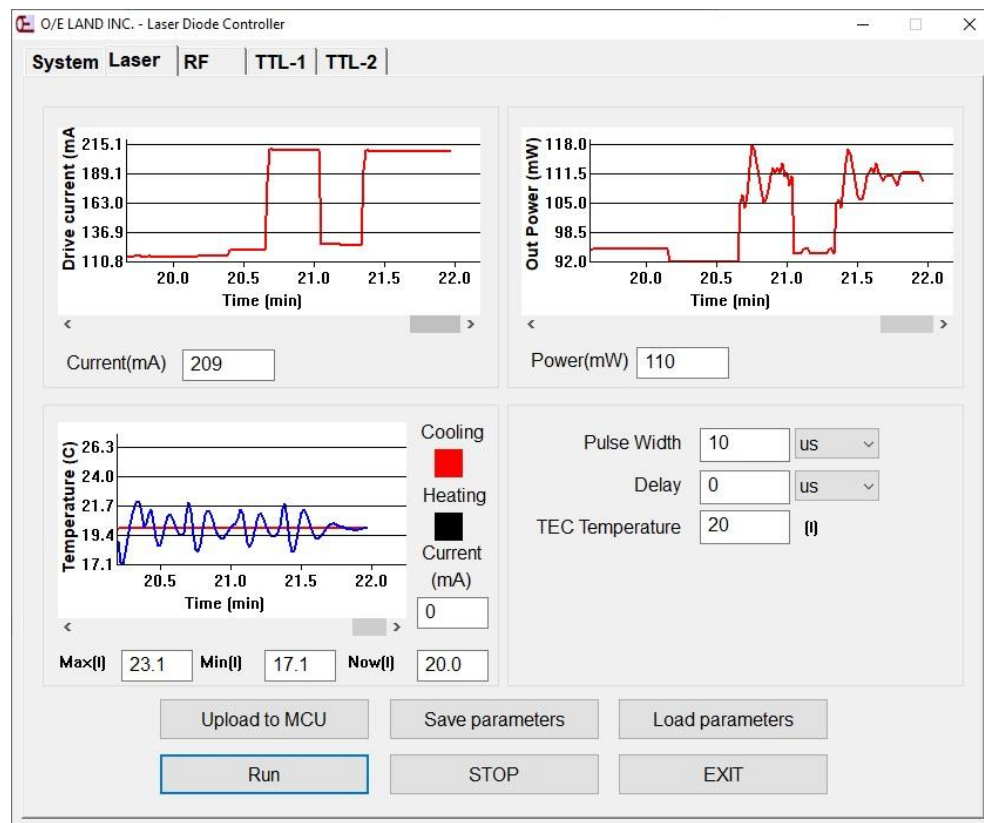
STAND-ALONE PULSE GENERATOR OUTPUT

- Repetition Rate :0 to 40 MHz
- Pulse Width Resolution: 5 nsec
-

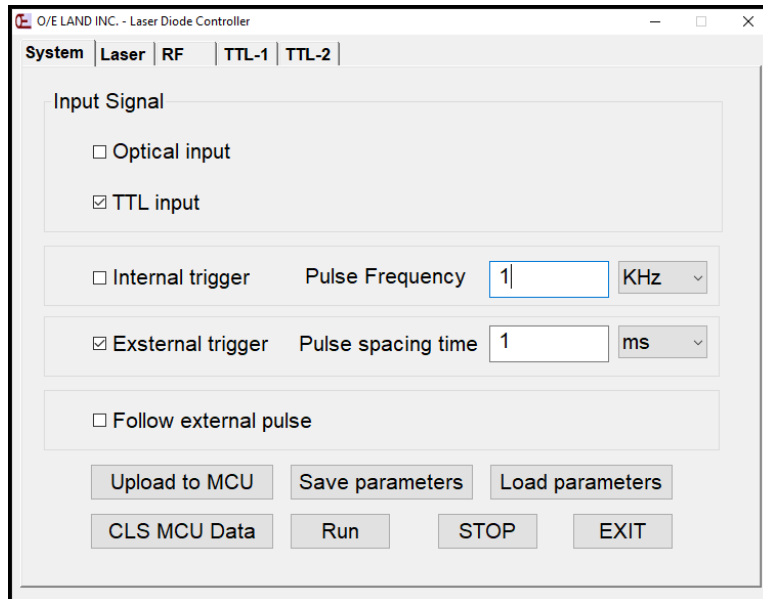
GENERAL

- Size: 110 x 130 mm
- Power Adapter: +12 VDC/1.6 A (included)
- USB 2.0: Cable Included, Software Included

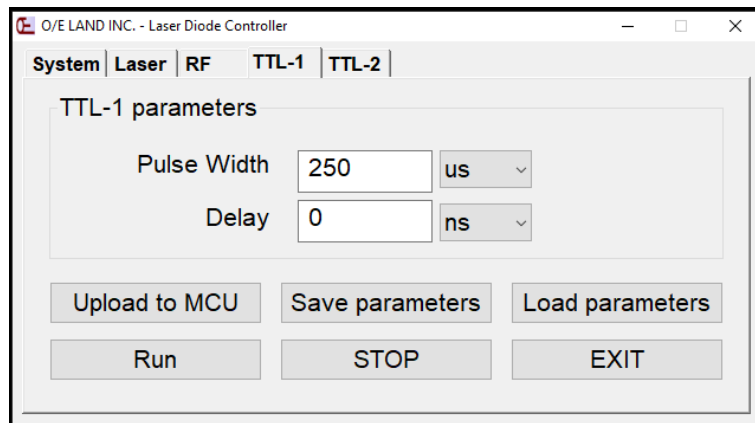
Interface



User Interface (Laser diode control tab)



User Interface (Main System control tab)



User Interface (RF, TTL-1 and TTL-2 control tabs)