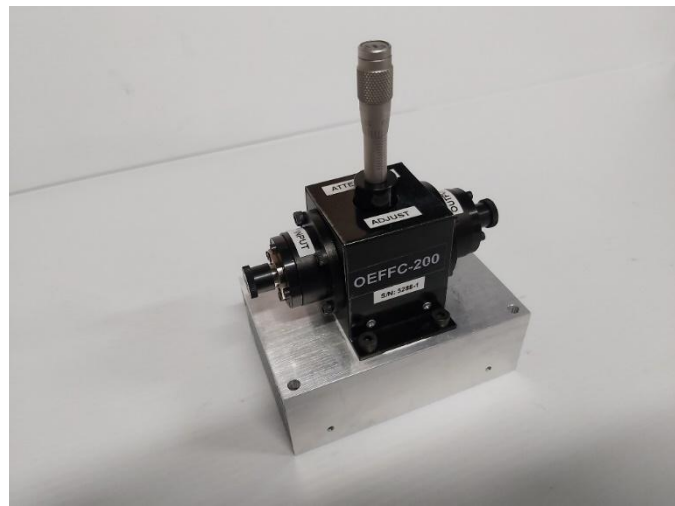


[OEPAS-OAT-HP]

High Power Optical Variable Attenuator

Features:

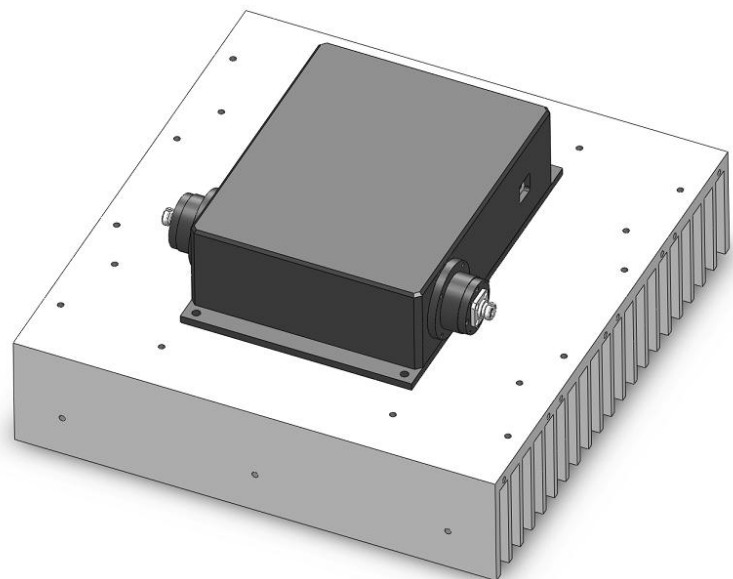
- For high power applications
- Wide attenuation range
- Variable and precise adjustment of attenuation
- Manual or electrical version
- User interface with USB connectivity included (electrical)
- Receptacle type
- Different wavelength ranges
- SM, PM, MM fibers
- Heatsinking mount included
- Small compact size
- High stability and long-term reliability



OEPAS-OAT-HP-M

Applications:

- Research and development
- System testing
- Instrument testing
- Telecommunications
- Power calibration
- Optical amplifiers and add/drop multiplexing



OEPAS-OAT-HP-E

Product description:

The new High-Power Variable attenuators from O/E Land Inc. is used to attenuate an optical signal, and to reduce optical power. The attenuation itself can be precisely adjusted, based on the customer needs.

In the cases when the value of the attenuation has to be constantly changed, a variable optical attenuator is required. In our manual-version variable attenuator, the attenuation is regulated using a precise micro-actuator knob. The attenuation can be adjusted with resolution of 0.1 dB. Alternatively, in our electrical version of the attenuator, the adjustment of the attenuation is controlled by a stepper motor. The unit is operated with a computer through USB connectivity, and a specialized user interface is also provided.

During the operation of the attenuator at high-power levels, some heating of the device can be expected. That's why the High-power attenuator from O/E Land Inc. comes with special heatsink mount (and with fans, in some cases) for improved thermal dissipation. It is included both with the manual and the electrical versions.

Specifications:

Parameter	Unit	OEPAS-OAT-HP
Type		High-power, Variable attenuation, Receptacles connectors
Versions available	-	Manual – with manual micro-actuator Electrical – with stepper motor and user interface
Center wavelength	nm	635-1800
Insertion loss @ 0 dB attenuation	dB	3
Attenuation adjustment range	dB	-3 to -80
Attenuation adjustment resolution	dB	0.1
Attenuation adjustment speed	dB/ms	0.02 (electrical)
Power handling (CW)	W	20
Fibre type	-	SM, PM, MM
Operating temperature	°C	+10 to +50
Storage temperature	°C	0 to +60
Dimensions (LxWxH) (approx.)	mm	Manual: 90x60x55 Electrical: 170x120x50

Note: During operation at high power levels, the device can become warm and/or hot.
Therefore, the unit is delivered mounted on a heatsink by default. In some cases, fans can be added for improved cooling.

Ordering number:

OEPAS-OAT-HP-WL-Type:	WL	P	Type
	Wavelength (nm)	Power handling (W)	M: manual E: electrical
Example:	OEPAS-OAT-HP-1550-10-M		